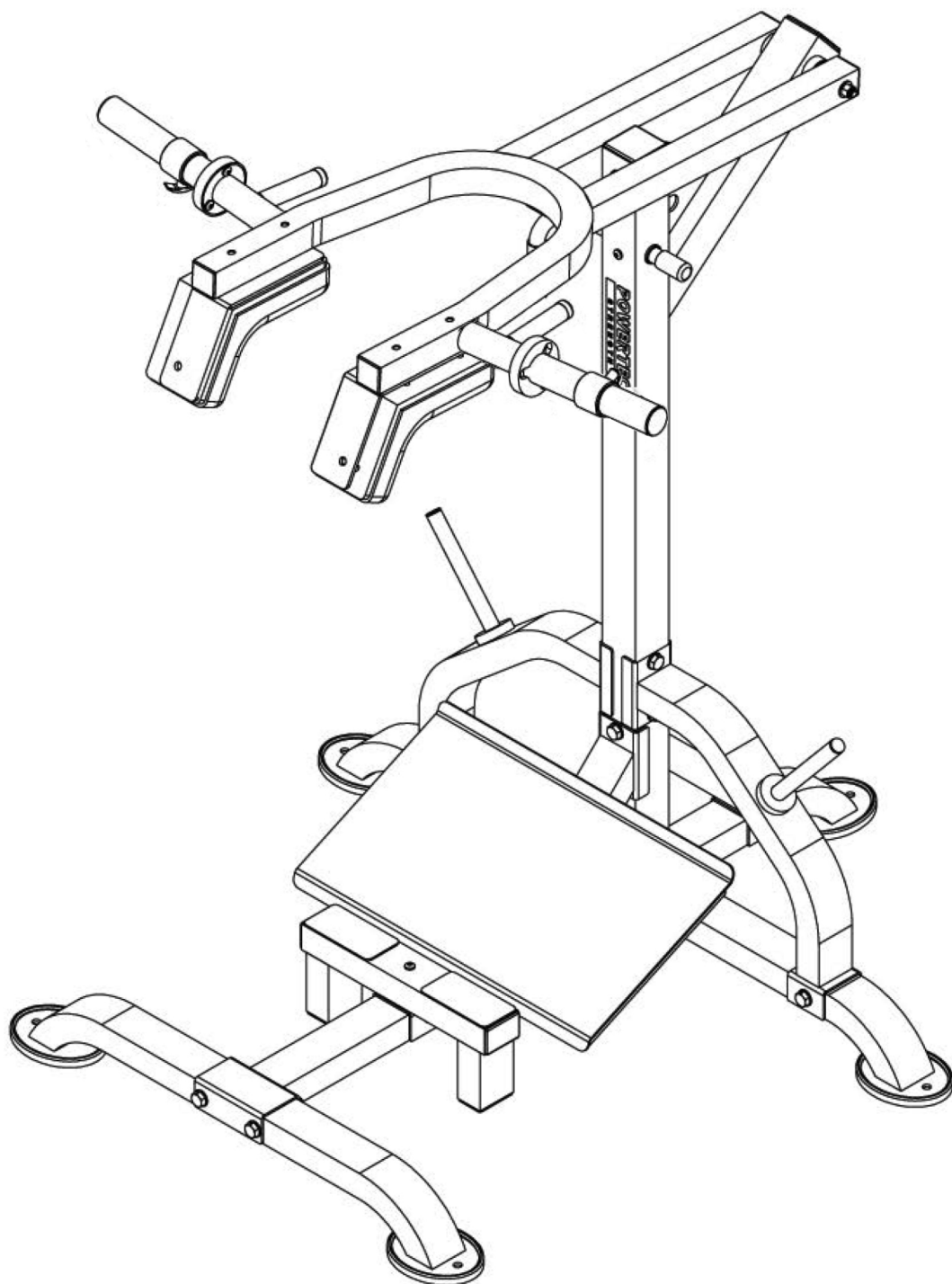


 **POWERTEC®**

**L-SC19**



**LEVERGYM SQUAT CALF**

**Manual**



**Thank you for purchasing your new Powertec equipment.  
To maximize the use of this equipment, please take a moment to study, understand and familiarize with the assembly instructions and follow the sequence of steps as provided in the manual.**

**Because of our products unique features, this manual was created to provide you with information on how to assemble and properly maintain your equipment.**

### **Table of Contents**

Introduction and Weight Capacities.....	2
Safety Instructions, Warnings and Cautions .....	3
Maintenance Tips.....	4
Tools Required for Assembly.....	5
Hardware List.....	6
Parts List.....	7
Exploded Diagram.....	8
Assembly Steps.....	9 - 12
Featured Exercises.....	13
Warranty Certificate.....	14
Warranty Registration Card.....	15

### **L-SC 19 Levergym Squat Calf**

#### **Weight Capacities**

Squat Lever Arms: 500 Lbs.

#### **Featured Exercises**

Machine Squats                      Calf Raises

#### **Recommended Strength Classic Systems**

L-CDA+16	Levergym Chin/Dip Assist	P-LM16	Powertec Lat Machine
P-BT16	Basic Trainer	P-LP16	Powetec Leg Press
P-CLS16	Compact Leg Sled	OP-255N	Olympic Plates 255 Lbs. Set

## **SAFETY INSTRUCTIONS, WARNINGS AND CAUTIONS**



It is recommended that users of this equipment receive a thorough medical exam before commencing any exercise program. This is especially important if you have never Exercised and or are over the age of 35, are pregnant or suffer from any health issues.

### **Read All Warnings and Cautions on this Manual and on the Product**

**This product should only be used after a thorough review of the Owner's Manual.**

**Keep children away from the product when in use.**

**Set up and operate the product on a solid level surface.**

**Do not set up the product on loose rugs or uneven surfaces.**

**Make sure adequate space is available to exercise and move around the product.**

**Inspect product before and after each use, inspect for worn out or loose parts, repair or replace as needed.**

**This equipment meets industry safety standards for stability when used for the intended exercise. Do not allow straps, resistance bands or other means to be attached to the framework of this equipment to perform stretching or body weight exercises as it can result to equipment instability and lead to serious injuries.**

**Always choose a workout that best fits your needs, physical strength and flexibility Levels, know your limits and your product limits and train within them.**

**Always wear proper footwear with nonskid rubber soles such, running, walking or Cross training shoes that fit well and provide support.**

**Do not exercise bare foot or in socks.**

**Always use common sense when exercising.**



## MAINTENANCE



The safety and performance of this product can be maintained only if it is examined regularly for damage and normal wear.

Examine the equipment before each use for damage and wear. Replace damaged and worn components immediately or put the equipment out of use until repaired.

### **Inspect Daily / Before Each Use!**

Inspect system. Make sure it is in good condition and operates smoothly.

If you find damage, **DO NOT USE**. Contact your authorized Powertec dealer or Powertec Customer Service Center for assistance.

### **Inspect Daily / After Each Use!**

Clean system with a clean, dry cloth. Use a mild detergent or spray on upholstery.

Do Not use cleansers containing enzymes.

### **Inspect Weekly!**

Clean your system fully with a clean and ammonia based cleaner.

Touch up any scratches with touch-up paint to prevent rust, if necessary.

### **Inspect Monthly!**

Examine the frame for signs of cracking or permanent bending. Do not use the equipment if you see this. Contact Powertec Customer Service Immediately.

If you have any questions on the correct use or maintenance of this equipment, call your authorized distributor or Powertec Customer Service at 800-250-6665

### **Our Customer Service Mission:**

*“Committed to Stronger Lives”*

By providing friendly and understanding service.



## Tools Required for Assembly



**M6 Allen Wrench**

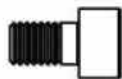


**Wrenches**  
13 mm = 1/2"  
19 mm = 3/4"  
21 mm = 13/16"

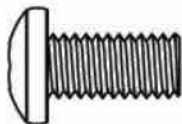


**8" Adjustable Wrench**

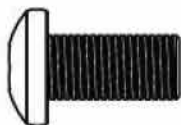
# HARDWARE LIST



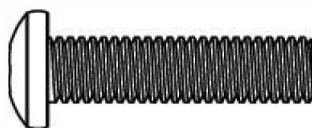
**NO.11.3 M6 X10 1PC**



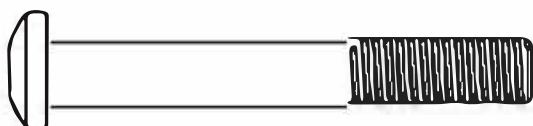
**NO.22 3/8" X 3/4" 2PCS**



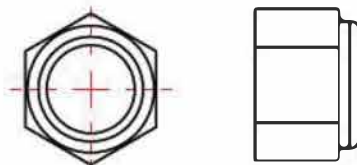
**NO.23 3/8" X 3/4" (GR8) 6PCS**



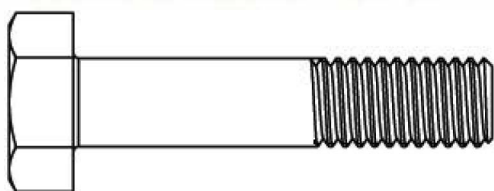
**NO.21 3/8" X 1 1/2" 3PCS**



**NO.20 3/8" X 2 7/8" 4PCS**



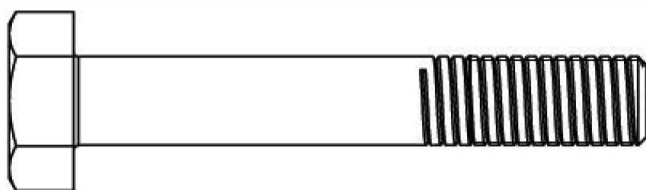
**NO.27 Nut 1/2" X 16T 17PCS**



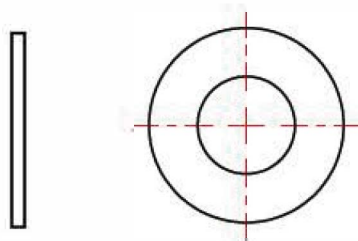
**NO.24 1/2" X 2 3/8" 1PC**



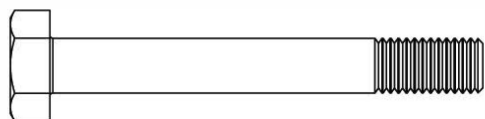
**NO.28 Nut 3/8" X 7T 6PCS**



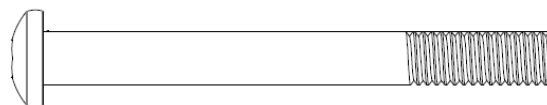
**NO.25 1/2" X 3 1/4" 2PCS**



**NO.29 Washer 1/2" 33PCS**



**NO.26 1/2" X 4" 13PCS**



**NO.30 Round Head Bolt 3/8" x 4 1/2" 1PC**

**L-SC19**

**LEVERGYM SQUAT CALF**

# PARTS LIST



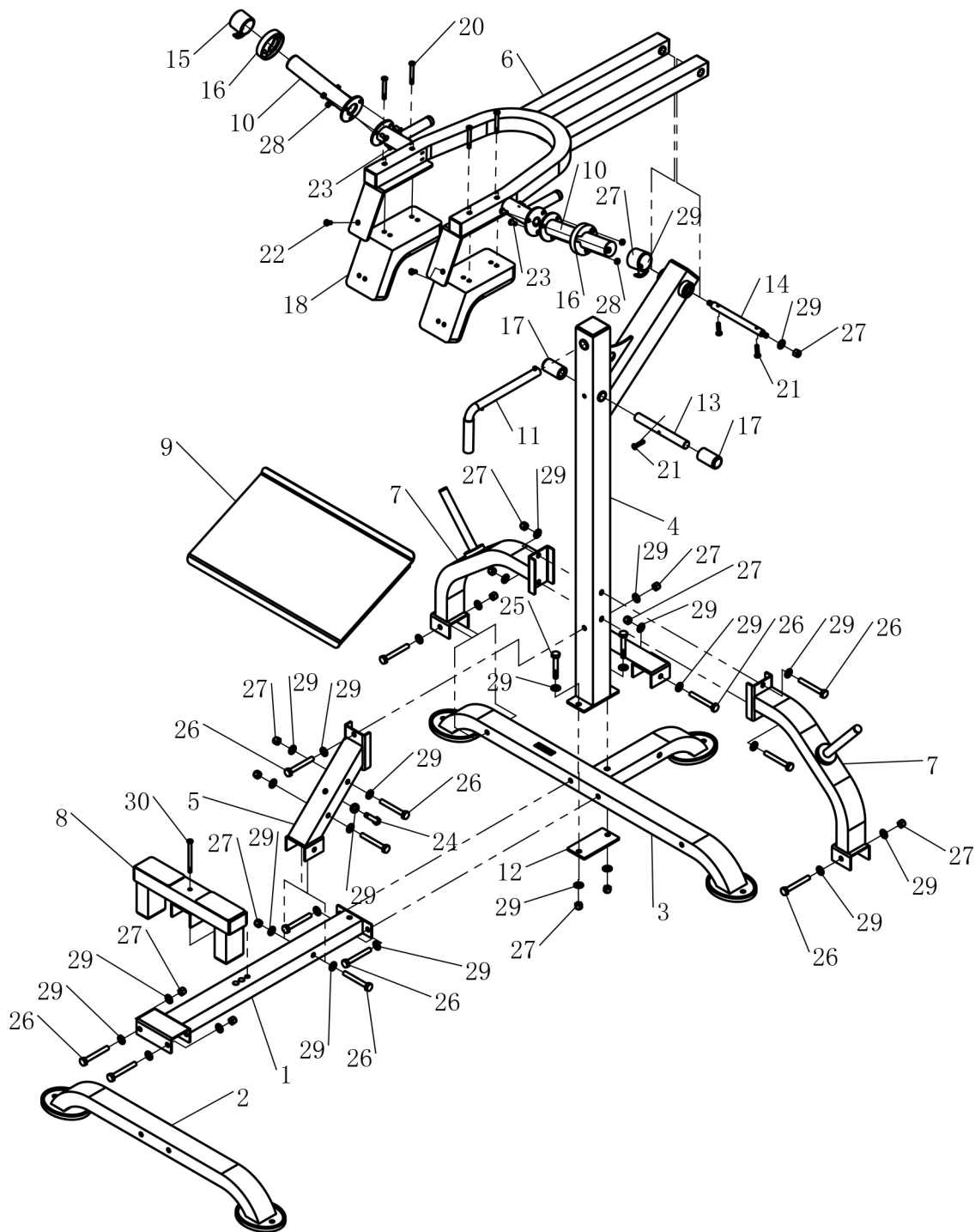
Item No.	Description:	Qty.
1	Center Base Frame	1
2	Front Base Frame	1
3	Rear Base Frame	1
4	Up-Right Frame	1
5	Front Support Tube	1
6	U Shape Squat Arm	1
7	Side Support Tubes	2
8	Foot Support Tube	1
9	Foot Plate	1
10	Weight Horns	2
11	Safety Bar	1
12	Reinforcement Plate	1
13	Safety Spotter Bar	1
14	Steel Axis	1
15	Collar	2
16	Rubber Bumper	2
17	Rubber Bumper	2
18	Shoulder Pad - Left	1
19	Shoulder Pad - Right	1
20	Round Head Bolt 3/8" x 2 7/8"	4
21	Round Head Bolt 3/8" x 1 1/2"	3
22	Round Head Bolt 3/8" x 3/4"	2
23	Round Head Bolt 3/8" x 3/4"	6
24	Hex Bolt 1/2" x 2 3/8"	1
25	Hex Bolt 1/2" x 3 1/4"	2
26	Hex Bolt 1/2" x 4"	13
27	Nut 1/2"	17
28	Nut 3/8"	6
29	Washer 1/2"	33
30	Round Head Bolt 3/8" x 4 1/2"	1

**L-SC19**

**LEVERGYM SQUAT CALF**

# EXPLODED DIAGRAM

POWERTEC®



**L-SC19**

**Note:**

**Unmarked hardware: Washers No. 29 and Nuts No. 27**

**LEVERGYM SQUAT CALF**

# ASSEMBLY ONE

 POWERTEC<sup>®</sup>

## Step 1

Install Center Base Frame No. 1 to Front Base Frame No. and Rear Base Frame No. 3. Use No. 26 Bolts, No. 29 Washers and No. 27 Nuts.

## Step 2

Install Up-Right No. 4 to Rear Base Frame and Center Base Frame No. 1 and No. 3 using Reinforcement Plate No. 12, Bolts No. 25, Washers No. 29 and Nuts No. 27

## Step 3

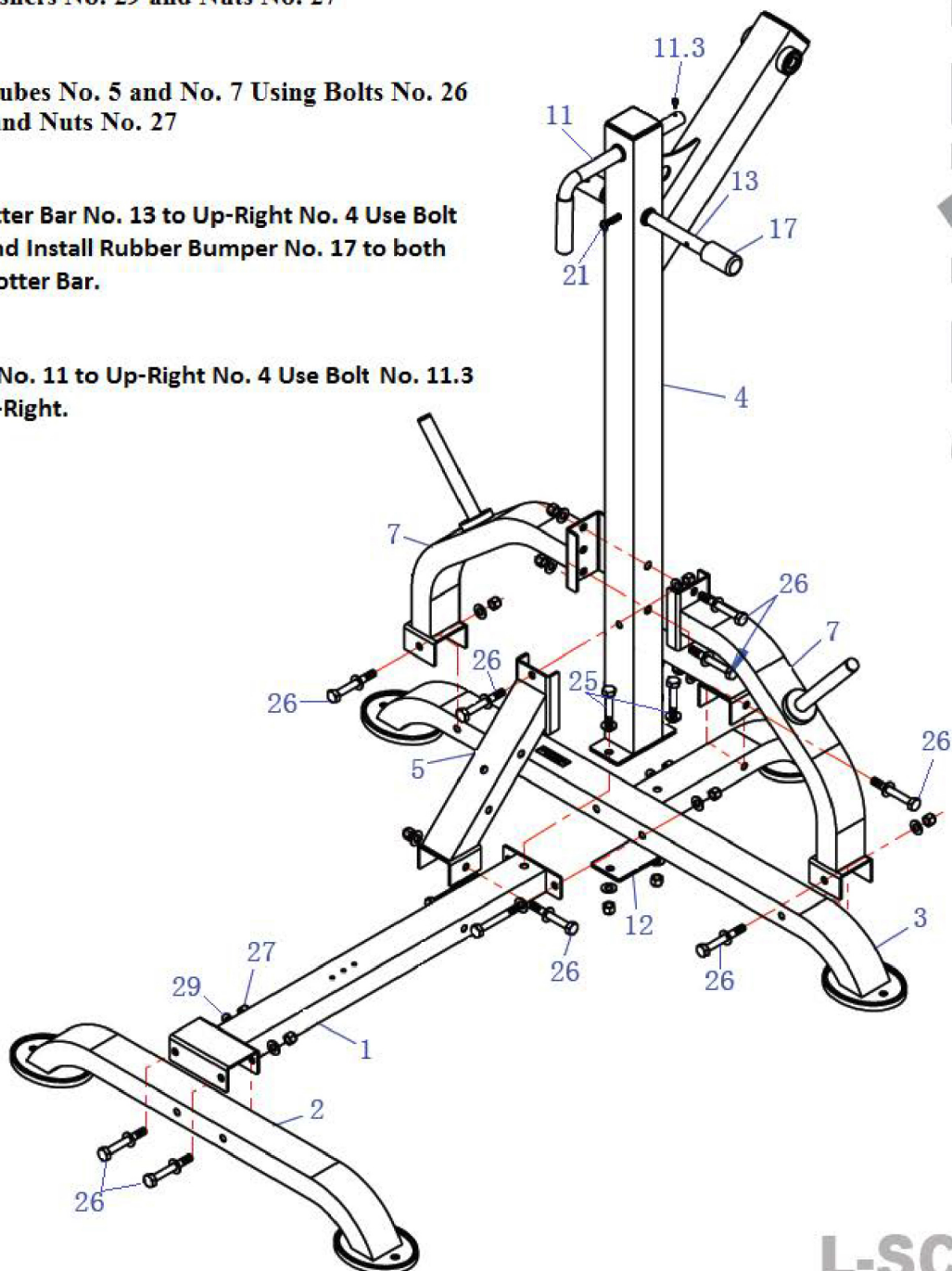
Install Support Tubes No. 5 and No. 7 Using Bolts No. 26 Washers No. 29 and Nuts No. 27

## Step 4

Install Safety Spotter Bar No. 13 to Up-Right No. 4 Use Bolt No. 21 Proceed and Install Rubber Bumper No. 17 to both ends of Safety Spotter Bar.

## Step 5

Install Safety Bar No. 11 to Up-Right No. 4 Use Bolt No. 11.3 to secure it to Up-Right.



L-SC19

LEVERGYM SQUAT CALF



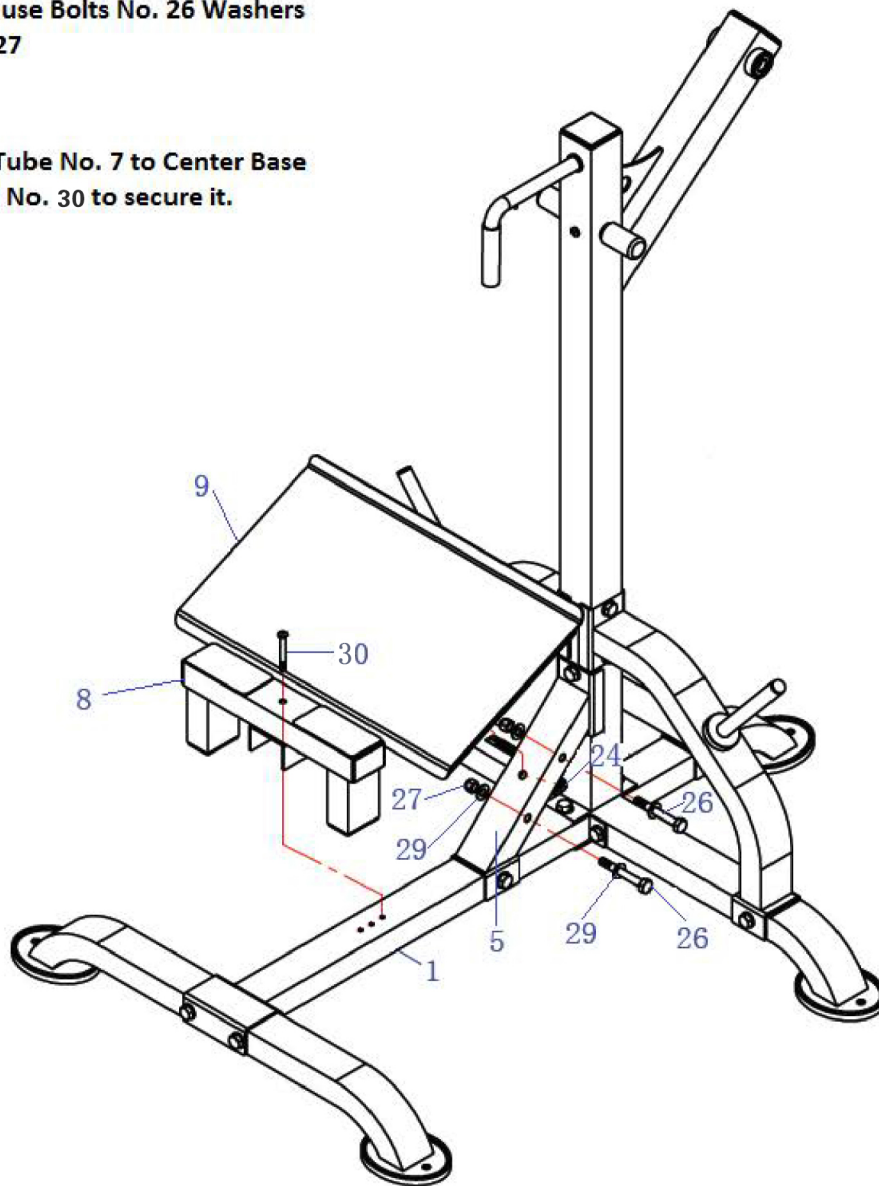
# ASSEMBLY TWO

## Step 1

Install Foot Plate No. 9 to support Tube No. 5 use Washer No. 29 and Bolt No. 24 on the back of plate, on the sides use Bolts No. 26 Washers No. 29 and Nuts No. 27

## Step 2

Install Foot Support Tube No. 7 to Center Base Frame No. 1 Use Bolt No. 30 to secure it.



**POWERTEC**®

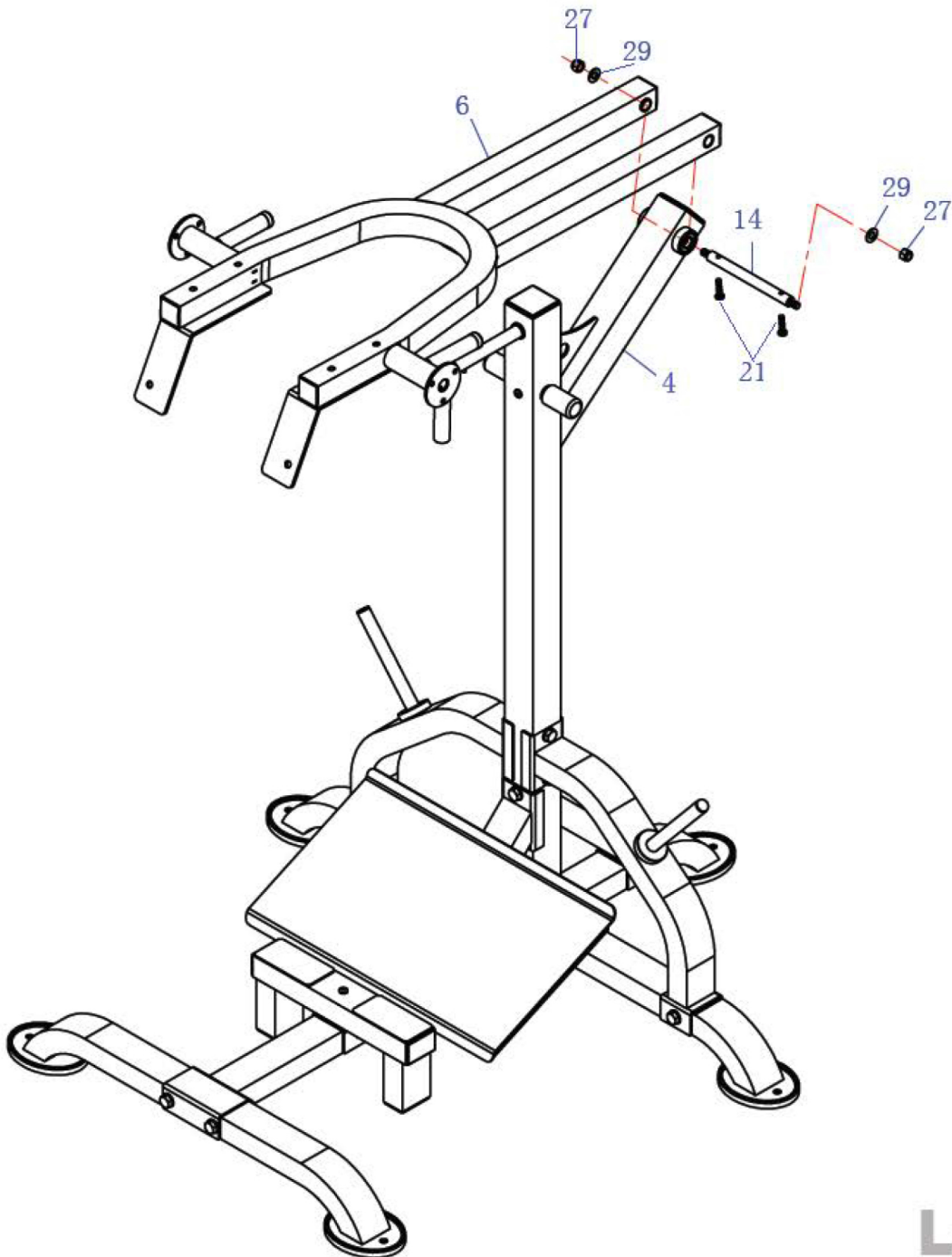
**L-SC19**

**LEVERGYM SQUAT CALF**

# ASSEMBLY THREE

## Step 1

Install U Shape Squat Arm No. 6 to Up-Right No. 4 using Steel Axis No. 14, Washers No. 29 and Nuts No. 27. Use Bolts No. 21 to secure Steel Axis to Press Arms.



  
**POWERTEC**<sup>®</sup>

**L-SC19**

**LEVERGYM SQUAT CALF**

# ASSEMBLY FOUR

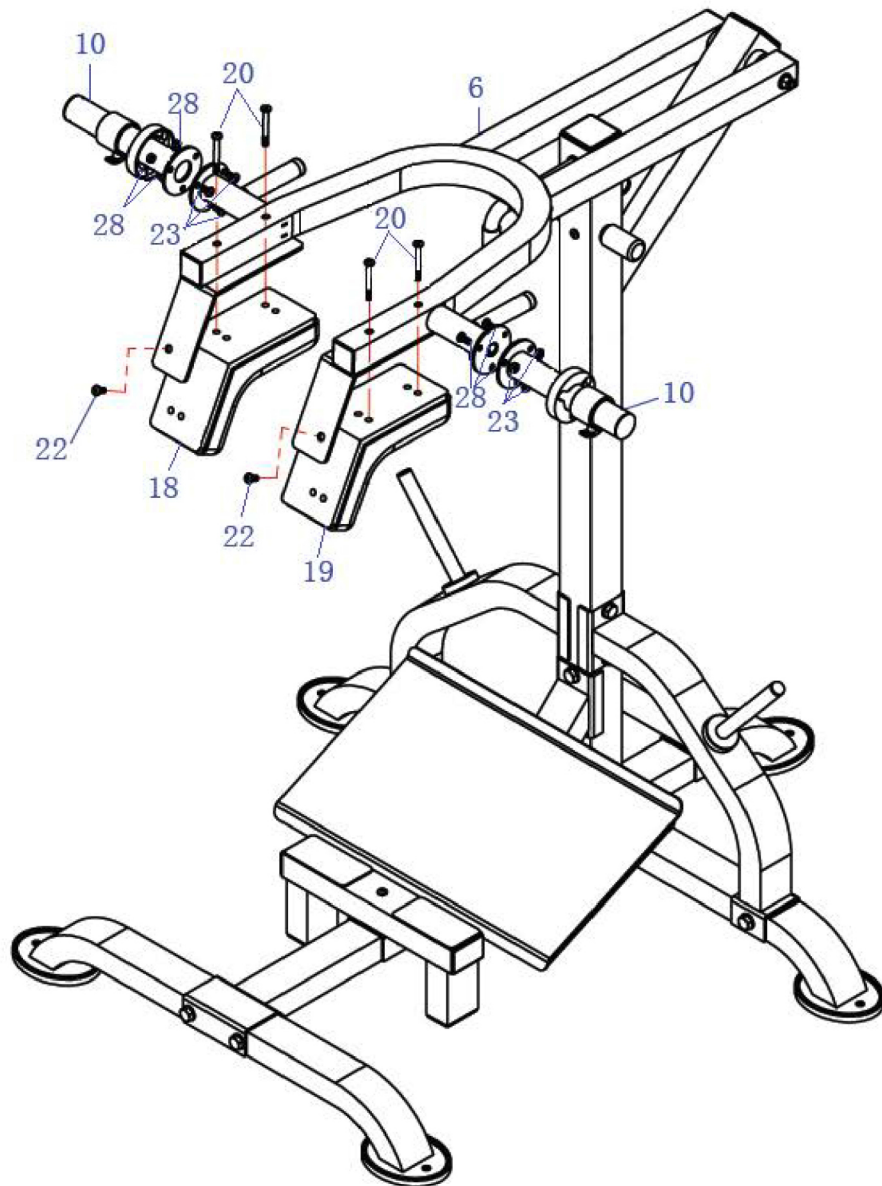
 POWERTEC®

## Step 1

Install Weight Horns No. 10 to U shape Squat Arm using Bolts No. 23 and Nuts No. 28 proceed and install Rubber Bumpers No. 16 and Collars No. 15

## Step 2

Install Shoulder Pads No. 18 and No. 19 using Bolts No. 22 and No. 20



**L-SC19**

**LEVERGYM SQUAT CALF**

# L-SC19

## Levergym® Squat / Calf



**Calf Raise**

### **Calf Raise**

#### **Starting Position:**

Facing the machine, position yourself so that the pads are resting comfortably on your shoulders.

Grip the handle bars with your palms facing each other.

Raise your heels by slowly rising on to the balls of your feet, until your ankles are fully extended. Keep your back and knees straight, do not allow your feet to rotate or roll

Pause briefly before returning to the starting position.



**Machine Squat**

### **Machine Squats**

#### **Starting Position:**

Facing the machine, position yourself so that the pads are resting comfortably on your shoulders.

Grip the handle bars with your palms facing each other.

Your feet should be firmly planted on the platform, shoulder width apart.

Bend your knees until they are in line with your toes, Do not extend past your toes.

Pause briefly before returning to the starting position.



# WARRANTY

**Serial No.**

Thank you for purchasing one of Powertec's products.

Powertec warrants that the Product you have purchased is free from defects in materials and workmanship.

Powertec offers a Lifetime Warranty on Structural Frame.(Excludes Surface Finish).  
5 year warranty on Moving Frames (Press Arms and other unspecified moving components).  
Two year warranty on Components (Bearings, Locking Pins, Pulleys, Cables, Slide Rods).  
One year warranty on Pads, Grips and other unspecified parts.

- All parts are shipped free of charge for first 90 days of date of purchase.
- Warranty is to original purchaser only (excluding dealer). Warranty is not Transferable in the event you sell the product.
- Warranty claims are subject to inspection and are voided if equipment shows Signs of abuse or alterations made other than the ones recommended by Powertec.
- Missing parts must be reported within 30 days from receipt of unit(s).
- Proof of purchase is required; your sales receipt must show date of purchase.
- For more information on the warranty or to obtain warranty service, please contact The appropriate Powertec Customer Service Department in the USA or Europe.

Powertec Inc. USA  
6301 Alondra Blvd.,  
Paramount, CA 90723- USA

Powertec Europe  
2 rue d'Aquitaine  
68390 Sausheim - France

**Phone: (800) 250-6665**  
**E-mail: [service@powertecfitness.com](mailto:service@powertecfitness.com)**

**Phone: + 33(0) 6 43 592 803**  
**E-mail: [contact@powertec-europe.fr](mailto:contact@powertec-europe.fr)**

Thank you for giving us the opportunity to fulfill your strength and fitness needs.

## **POWERTEC®** Customer Warranty Information Sheet

Last Name: \_\_\_\_\_ First Name: \_\_\_\_\_

Company: \_\_\_\_\_

Street Address: \_\_\_\_\_

City: \_\_\_\_\_ State: \_\_\_\_\_ Zip Code: \_\_\_\_\_

Daytime Telephone No: \_\_\_\_\_ Alternate Telephone No. \_\_\_\_\_

E-Mail: \_\_\_\_\_ Date of Purchase: \_\_\_\_\_ Purchase Price: \_\_\_\_\_

Dealer Name and Address: \_\_\_\_\_

Model Name & Code: \_\_\_\_\_ Optional: Male / Female: \_\_\_\_ Age: \_\_\_\_ Occupation: \_\_\_\_\_



POWERTEC IS NOT LIABLE IF THE TRAINER SHOULD INJURE THEMSELVES WHILE USING POWERTEC EQUIPMENT OR WHILE PERFORMING THE TRAINING ROUTINE



POWERTEC INC.  
6301 Alondra Blvd.,  
Paramount, CA 90723  
USA  
Phone:(800)250-6665

POWERTEC EUROPE  
2 rue d'Aquitaine  
68390 Sausheim – France

Phone: +33 (0)6 43 592 803  
E-Mail: [contact@Powertec-europe.fr](mailto:contact@Powertec-europe.fr)

[service@powertecfitness.com](mailto:service@powertecfitness.com)  
[www.powertecfitness.com](http://www.powertecfitness.com)

Return Warranty Registration Card to Appropriate Powertec Adress:



---

---

---

Place  
Stamp  
Here



---

---

---

